

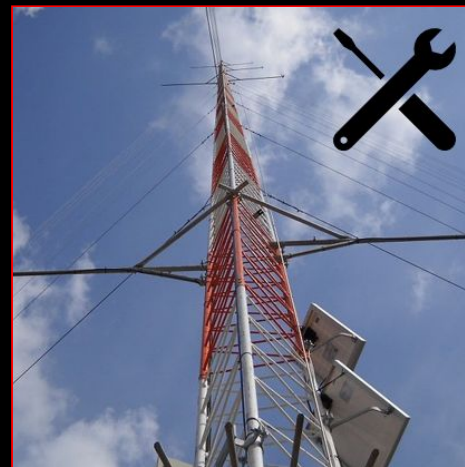


Atmospheric Measurements Tower

Part II - Tower Manufacturing

Manufacturing an atmospheric measurements tower prototype, based on a predetermined list of requirements.

Laboratory: CCLab
Section: All
Status: Available (Spring 2021)



Description of the project

The first space settlements will be scientific. As a result, it is critical to develop capabilities in establishing scientific outposts on celestial bodies, which may have similarities with some extreme environments that we have here on earth. One of the key experiments conducted within Asclepios consist in carrying out atmospheric measurements using a tower installed by astronauts. This tower will be the focus of three semester projects: Tower Requirements; Tower Manufacturing; and Data Analysis.

Conducted under the supervision of the Composite Construction Laboratory (CCLab), this project aims at building an atmospheric measurement tower prototype, by adapting the list of requirements provided by the student working on the Atmospheric Measurements Tower - Part 1 project, to the technical constraints inherent to the manufacturing process (e.g. which material to use?)

Note that this project can also be chosen for the course *CIVIL-464 Composite design and Innovation*.

Name of Supervisor: Anastasios Vassilopoulos
Name of Asclepios' contact: Jérémy Aubert:
jerem.aub@protonmail.com



space@your
service